

1. 2020 PMCV Internship Match  
by Kevin Shi, Chair of MSCV
2. Internship Statistics
3. Visa
4. Victorian Application  
by Heather Han
5. Interstate Application  
by Alana Robinson

---

# UMMSS International Internship Info Night 2020

---



# Internship Statistics 2020

UMMSS International Subcommittee



# UMMSS

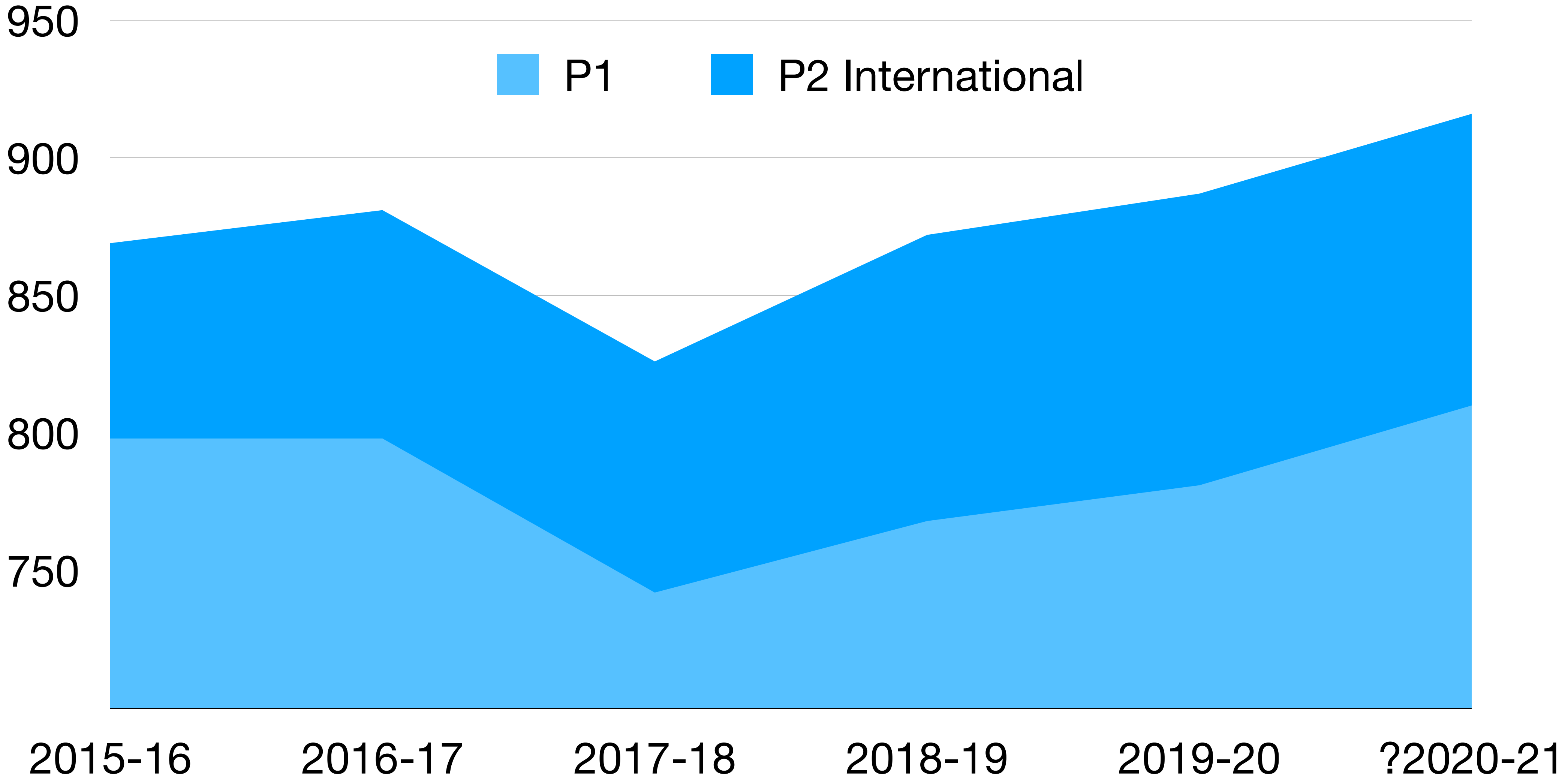
UNIVERSITY OF MELBOURNE MEDICAL STUDENTS' SOCIETY

# Disclaimer

- This document was prepared to inform current MD international students about the results of Round 2 and 3 offers released on the 24th of August and 7th September 2020. The information contained in this document have been collected to the best of the ability of the UMMSS international subcommittee at the time of its release.
- The numbers here do not represent the final outcome for 2020/21 PMCV internship matching process, neither do they represent future outcomes, predict future trends, or determine the factors related to obtaining an internship.
- We sincerely thank the MD4 international students who have kindly responded to us via the anonymous survey and through personal communications. Your responses have contributed to the knowledge of this issue amongst the students of the subsequent year levels.

- PMCV Round 2 offers released on the 24th August 2020
- Changes this year:
  - 40% z-score
  - 40% interview (Sonru platform)
  - 20% CV, cover letter etc
- Survey results collected until the 9th October 2020
- N = 41 collected via surveys and personal communication

# PMCV internship matching by applicant category



	<b>RMH</b>	<b>St Vincent's</b>	<b>Austin</b>	<b>Western</b>	<b>Northern</b>	<b>SUM</b>
<b>Matched initially</b>	3	2	4	10	3	22
<b>Matched later</b>	3	4	1	0	0	8
<b>Unmatched as of 9/10/2020</b>	1	3	1	0	2	7
<b>Did not apply/ interstate/ overseas</b>	1	1	1	0	1	4
<b>SUM</b>	8	10	7	10	6	41

# RMH

- $N = 8$
- 3 matched initially: RMH x 2, Wangaratta x 1
- 3 matched later: RMH x 2, Portland x1
- 1 withdrew: Singapore x 1
- 1 unmatched as of yet (9/10/20)

# St Vincent's

- N = 10
- 2 matched initially: 1 x St Vincent's, 1 x Ballarat
- 3 matched later: 1 x Ballarat, 1 x Gippsland, 1 x Bairnsdale
- 1 interstate: 1 x Rockhampton
- 1 provisional JDTP: 1 x Grampians
- 3 unmatched as of yet (9/10/20)



# Austin

- $N = 7$
- 4 matched initially: 1 x Austin, 1 x RMH, 1x Wangaratta, 1 x Mildura
- 1 matched later: 1 x Austin
- 1 did not apply: 1 x Singapore
- 1 unmatched as of yet (9/10/20)

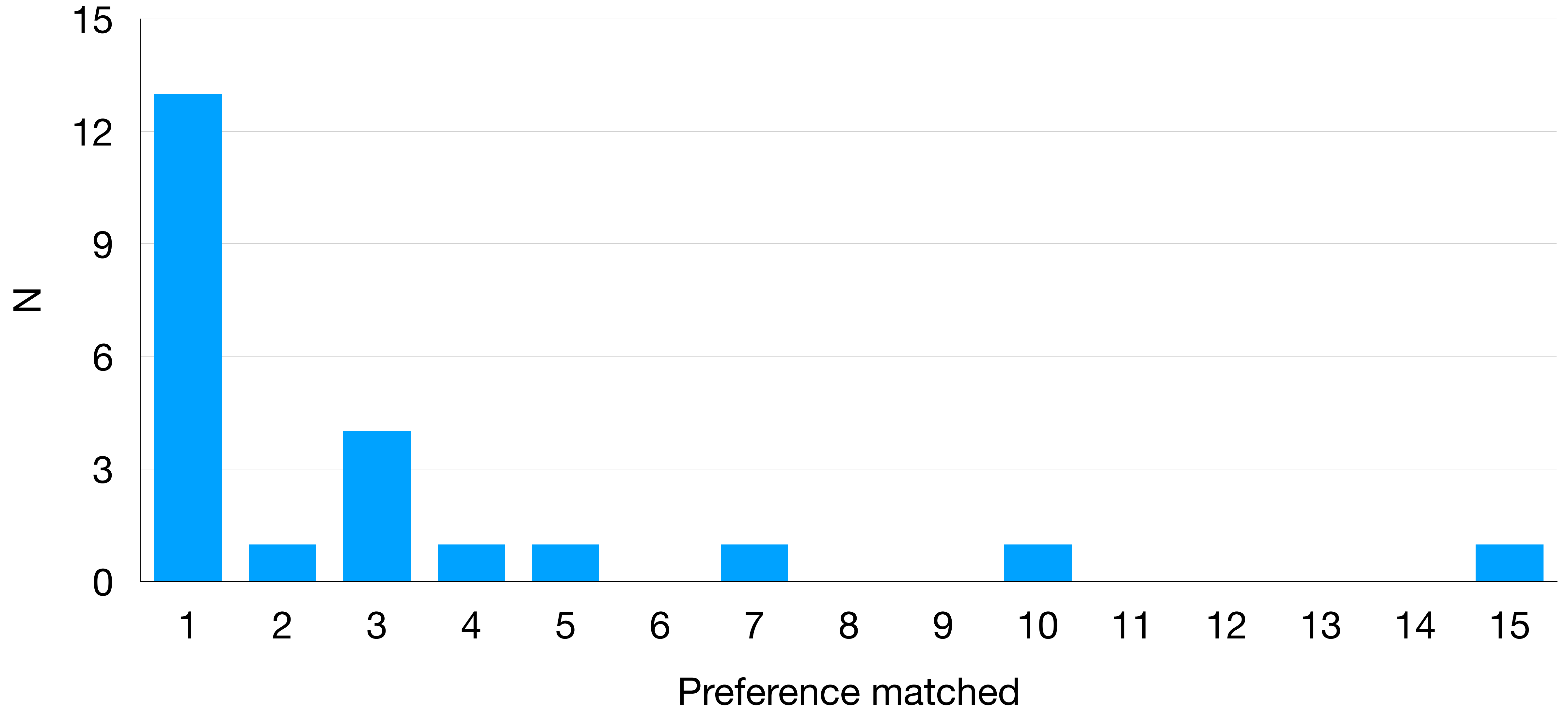
# Western

- $N = 10$
- 10 matched initially: Western x 10

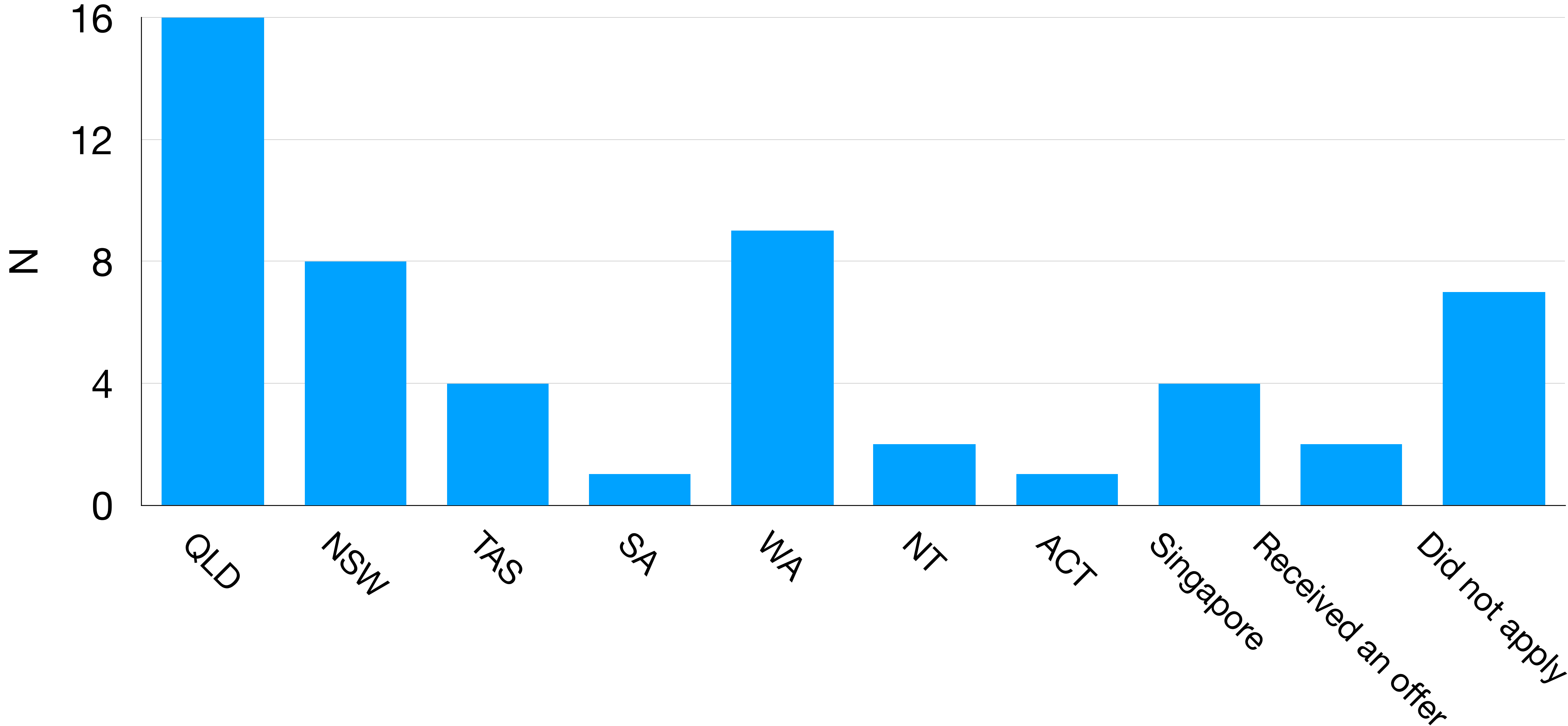
# Northern

- $N = 6$
- 3 matched initially: 2 x Northern, 1 x Portland
- 1 did not apply: 1 x Singapore
- 2 unmatched as of yet (9/10/20)

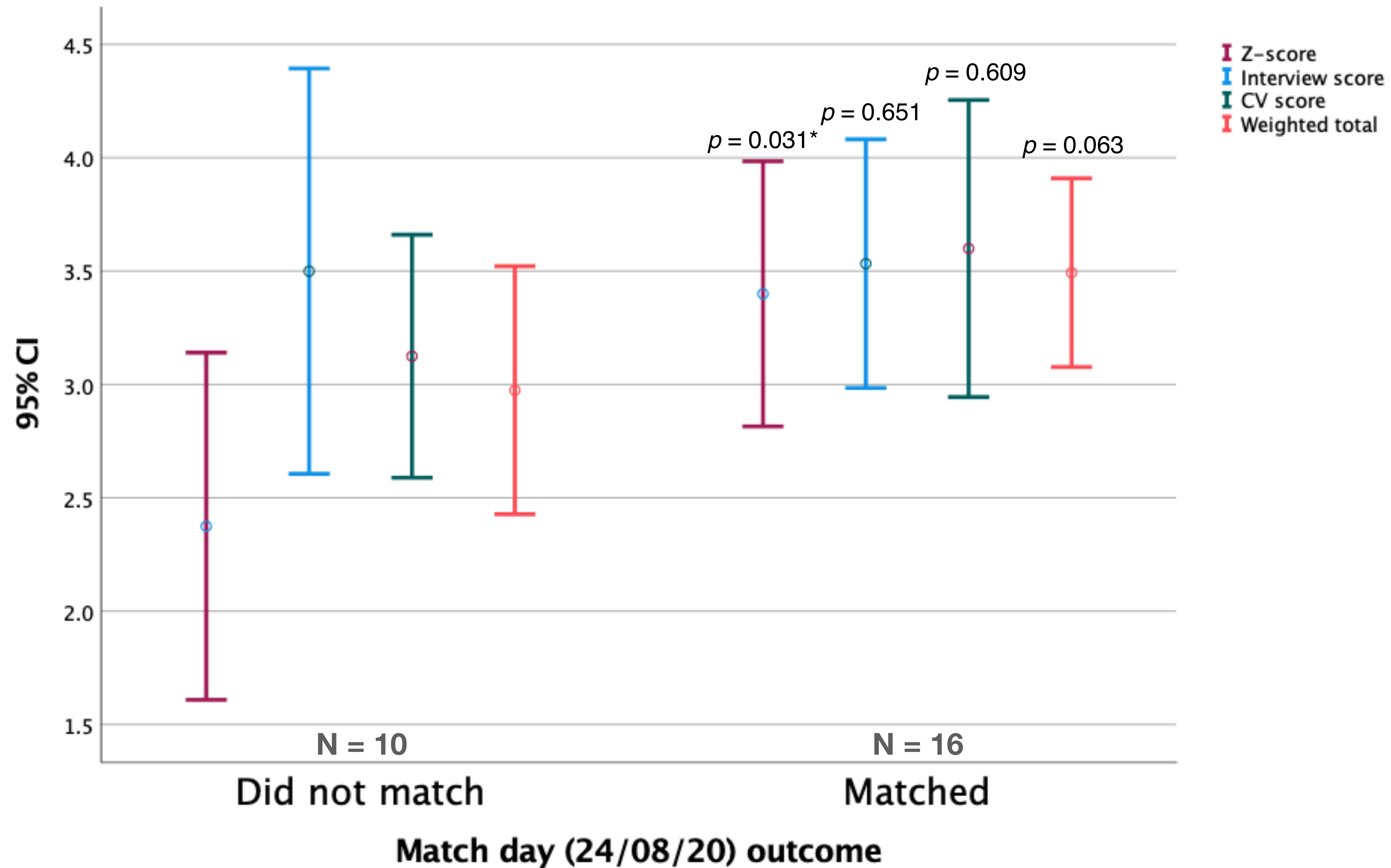
# Number of students matched to their PMCV preferences



# Interstate and overseas applications



# Comparison of assessment components vs match day outcomes



## Correlation between preferences matched and assessment components

<b>Kendall's <math>\tau_b</math></b>	<b>Interview Score</b>	<b>CV Score</b>	<b>Z-Score</b>	<b>Weighted total</b>
<b>Correlation Coefficient</b>	0.367	-0.024	-0.052	0.119
<b>Sig. (2-tailed)</b>	0.053	0.896	0.791	0.491
<b>N</b>	22	22	20	22

**“Apply broadly”**

**“It took a while before the second match date was announced. And this year the circumstances are very different from other years. Covid-19 may skew results significantly”**

**“Difficult, unfair to Priority 2 candidates. Kept waiting for long periods of time with no certainty.”**

**“Sonru is very inequitable. Not allowing international students to call up health services is extremely unfair. Our UMSU international representative has not been advocating for international students. I am lucky to have matched, but also dissatisfied at this process. I will be utterly gutted if there is no increased consideration for international students next year. ”**



*“Applicants are NOT eligible for a placement under the PHS if they:*

- have already been offered and accepted an internship position from a state or territory for the next calendar year; and/or ...”*

**Changes to the Junior Doctor Training Program Private Hospital Stream, Department of Health**

**Visas**

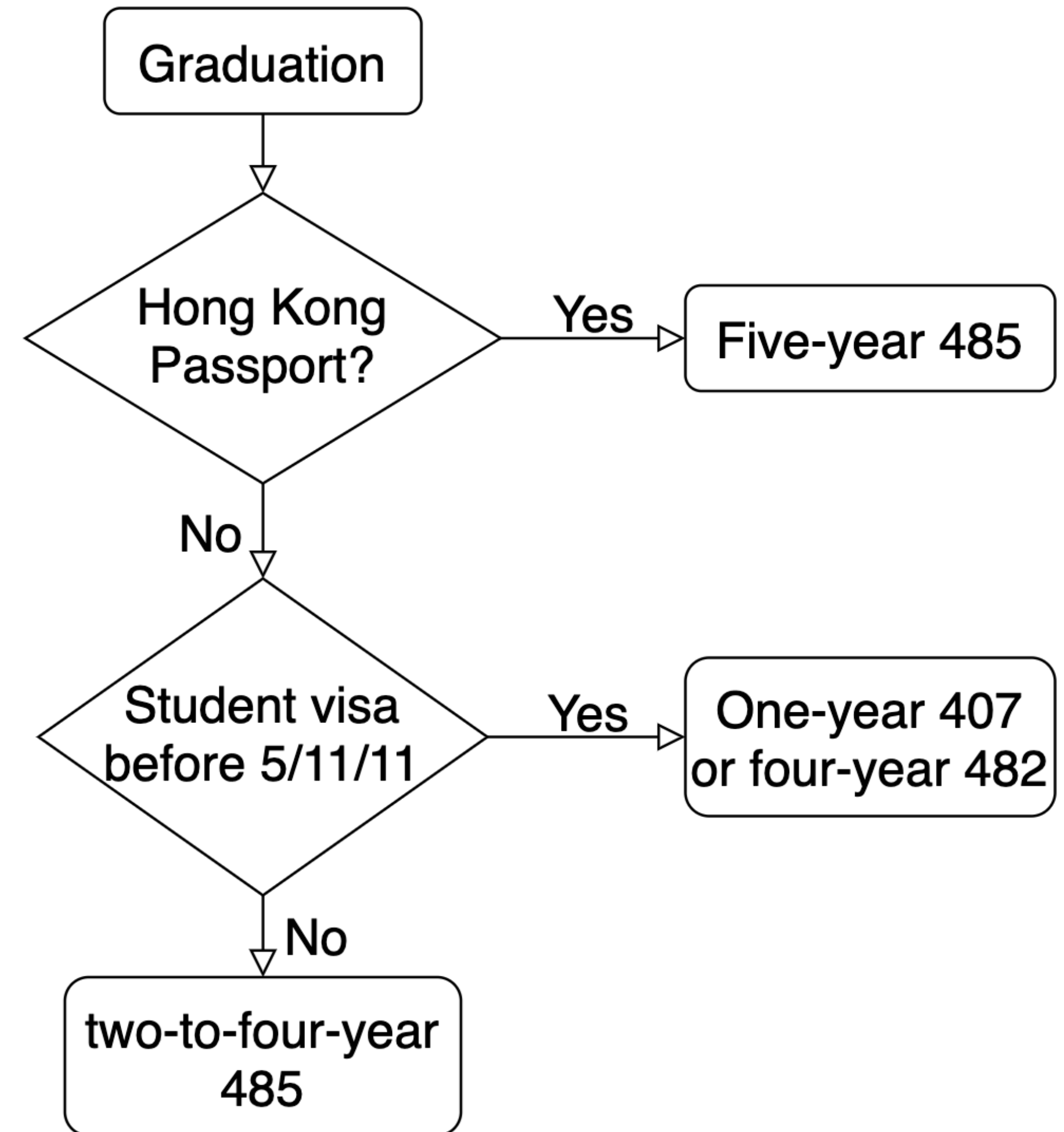
# Disclaimer

- Information contained in this presentation is for general introduction to various visa requirements only. Each individual case will, and should, be assessed and considered on its own merits.
- We recommend you contact an accredited migration agent/lawyer to identify any issues in your case and the visa options appropriate to your individual circumstances.
- UMMSS International shall not be held responsible for anyone whose visa application encounters problems, or results in a refusal, if he/she applies for a visa based on information contained in this presentation.

# Internship

## common options

- Negotiated with health services upon receiving your contract



# Permanent Residency

## common pathways

- Skilled Independent visa (subclass 189)
  - Point based system
  - 85 points at the completion of internship if you are 25-33 y/o, 'superior English' (PTE >79 across all bands), and single/partner is PR/citizen
  - 90 points if you also hold a NATTI certificate
- Employer Nomination Scheme visa (subclass 186)
  - Sponsored by health services
  - Three-year employment in Australia with a 482/TSS visa
- Skilled Nominated visa (subclass 190)
  - Currently not available in Victoria
- Permanent Residence (Skilled Regional) visa (subclass 191)
  - Lived for at least 3 years and have a taxable income at or above a specific income threshold for at least three years

# Last slide from UMMSS International

- All the best to the MD4s who remained unmatched at this stage!
- Please feel free to contact me at *international@ummss.org.au* for any questions or concerns.